

# Social Policy Framework Terms of Reference

April 22, 2024



LLOYDMINSTER

# Social Needs Assessment



[lloydminster.ca](http://lloydminster.ca)



A A A [Accessibility icons]

What are you looking for? [Search icon]

### Lloydminster Social Needs Assessment

A social needs assessment is an in-depth community engagement campaign to ensure residents are heard and involved. Understanding what is impacting a community, what can be done, who should be involved and what roles they should have, is critical for effective and efficient service delivery.

In 2022, the City of Lloydminster launched a social needs assessment to connect with residents, stakeholders, and local partners to gain a better understanding of current social needs. From April 11 to May 30, 2022, the public was asked to complete the *Lloyd Needs* survey. Over 2,000 responses were collected, and more than 250 conversations were had. From this survey, a **What We Heard Report** was created to summarize the data received.

### Lloydminster's Social Policy Framework

The issues identified through the Social Needs Assessment are complex and require a thoughtful and collaborative approach to be resolved. The Social Policy Framework was developed to create a common understanding for how community, business, and government can address

#### Related Links

- [Family and Community Support Services](#)
- [Social Policy Framework Executive Summary](#)

#### Contact Us

**Family and Community Support Services**  
 City Hall, 4420 50 Avenue,  
 Lloydminster, AB, T9V 0W2

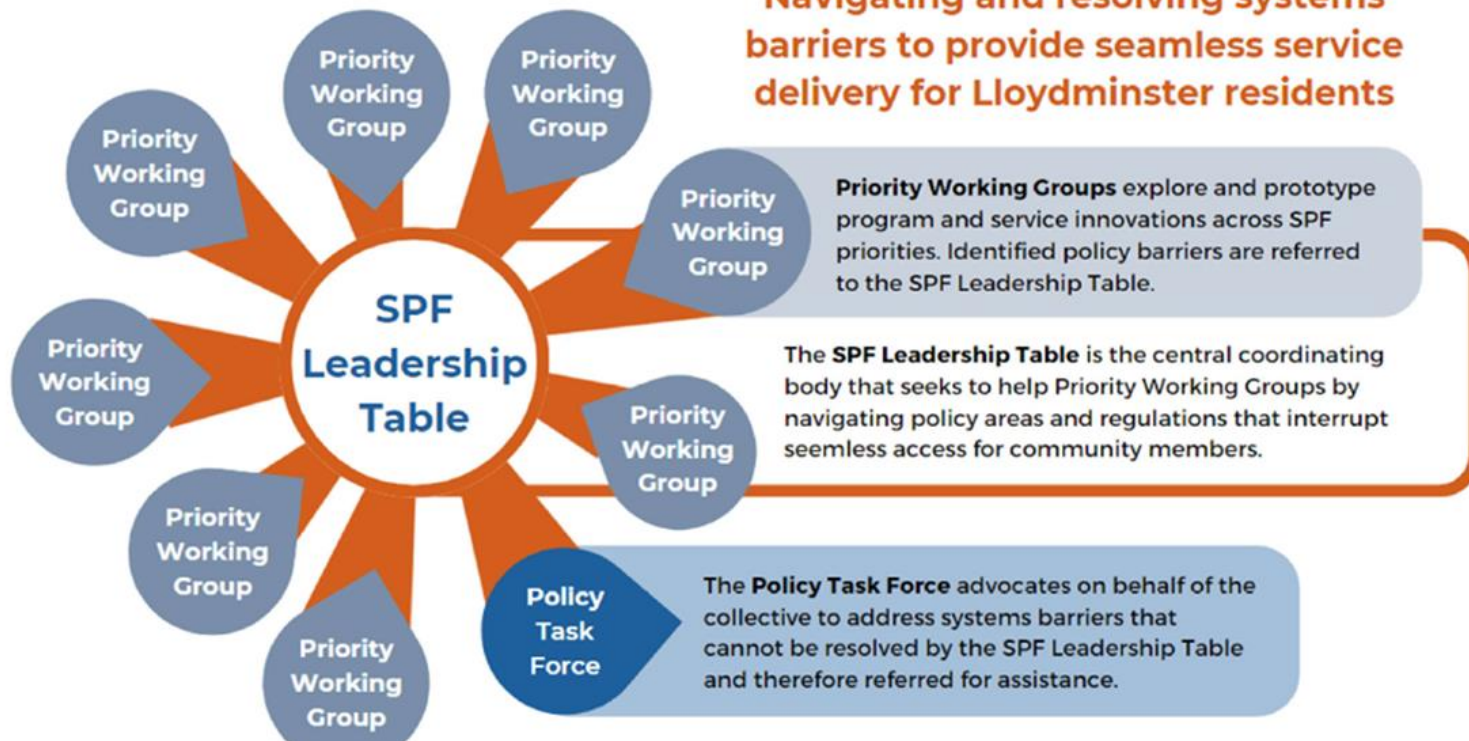






# SPF Leadership Team

Navigating and resolving systems barriers to provide seamless service delivery for Lloydminster residents





## Convene

Identify individuals, groups, and organizations in the community having a vested interest in the priority areas.

## Common Agenda

Start with a shared vision for change to ensure focus and clarity.

## Shared Measurement

Determine indicators and outcomes for success to hold stakeholders accountable to the end results.

## Mutually Reinforcing Activities

Different stakeholders will perform different functions – all coordinated to maximum value.

## Continuous Communication

Openly sharing successes, opportunities and challenges will build trust and feed momentum.

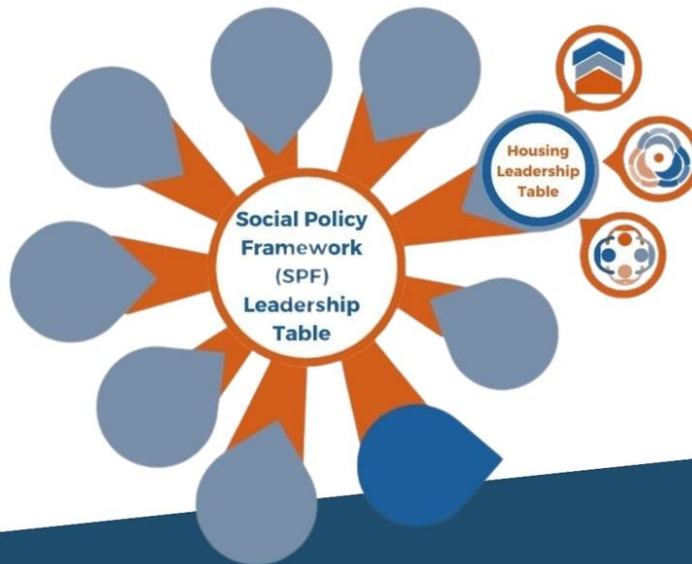
## Backbone Support

Facilitation and administrative skills are critical for collective impact initiatives – the mortar or glue.



# SPF Working Group

## Using the Social Policy Framework (SPF) - Housing Working Group





# Action Item Example

## Municipal and Community Leadership

Objective	Action Items	Description	Lead	Partners	Priority
Establish and support a strong housing governance and leadership model within the Social Policy Framework (SPF)	Host a housing symposium with federal and provincial government departments.	Coordination between provincial government departments in Alberta and Saskatchewan could pose significant challenges, or facilitated well, tremendous opportunities for collaboration. A 'government-centric' symposium would help to build relationships and provide deeper clarity on programs and services available to the community.	SPF Housing Working Group  City of Lloydminster	Community housing organizations  CMHC  Saskatchewan Housing Corporation  Ministries of Justice, Child and Family Services, Health (AB/SK)  Metis Nations – Saskatchewan  Rural Development Network (AB)  Alberta Seniors, Community, and Social Services (Housing Division)	<b>High</b>  The community housing conference was a good starting point for discussions and potential collaboration. A symposium specifically designed to deepen relationships and explore opportunities for collaboration is needed to advance the housing agenda in Lloydminster.





## Values

Equity  
Interdependence  
Innovation

## Principles

Evidence-based  
Inclusive  
Collaborative  
Resident-Centric  
Accessible  
Intersectional

## Strategies

Service Delivery  
Monitoring and  
Evaluation  
Roles  
Implementation  
Model

## Priorities

Access to Health &  
Social Services  
Income Inequality  
Transportation  
Safety & Security  
Mental Health  
Recreation  
Housing and  
Homelessness



LLOYDMINSTER

---

# Values Example

## Equity

Equity can be understood as the importance of being fair and just, and that as people, we do not all start from the same place and must acknowledge and make adjustments to rectify imbalances. In the sense of social policy, this implies two primary factors are met - access and quality.

- Access is the elimination of barriers that prevent the full participation of any individual or group.
- Quality is focused on the needs of the whole community, and providing the right services at the right time, in the right place, and to the right people.



LLOYDMINSTER

---

## Next Steps

- Recruitment and appointment of Social Policy Framework Leadership Team members.
- Establishing a Housing Working Group.
- Establishing an Income Inequity (Poverty) working group.
- Recruitment for the Social Policy Task Force.
- Developing a long-term plan for future working groups.





LLOYDMINSTER

**“We are a  
community of  
possibilities,  
not a  
community of  
problems.”**

**-Peter Block**



[lloydminster.ca](http://lloydminster.ca)